

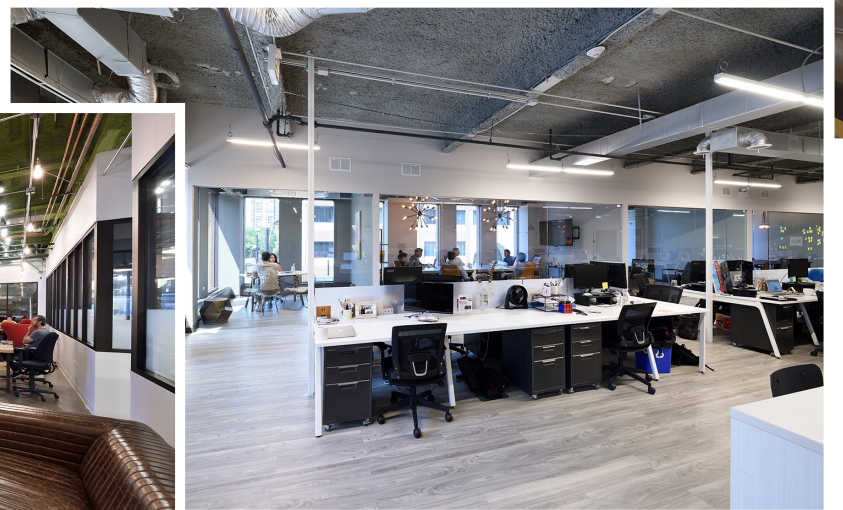
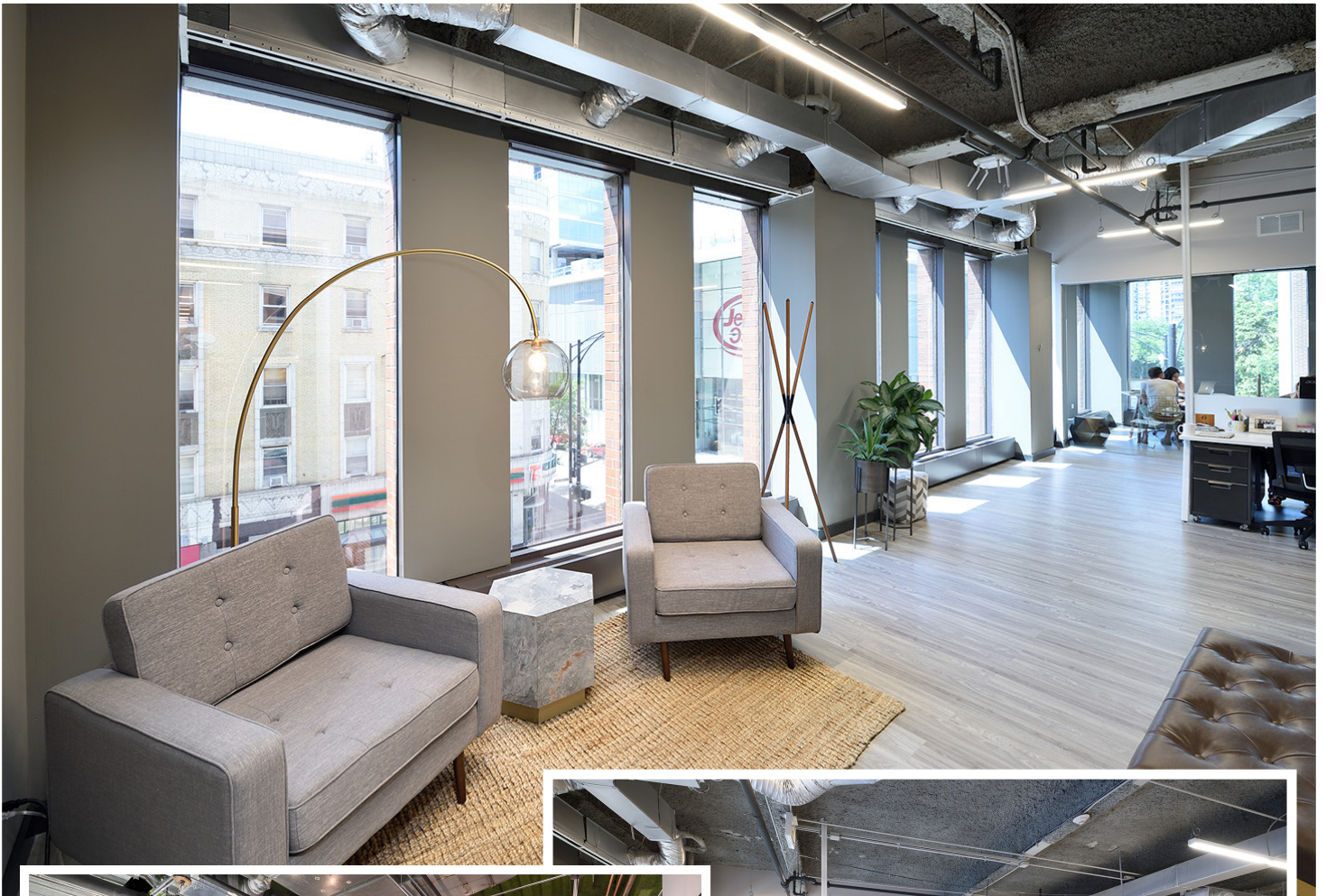
CLARK — DIVISION

1165 N CLARK



CUSHMAN & WAKEFIELD

Concrete loft building with excellent natural light on all sides
Recently refurbished lobby and common areas
Spec suites coming soon!



The Building

Space available from 800 RSF - 28,400 RSF

TOTAL BUILDING RSF
102,000 RSF

TYPICAL FLOOR PLATE
13,000 RSF

AMENITIES

Barre Code gym and CVS/Pharmacy
Dog friendly

ACCESS & SECURITY

Security provided 6:00am-6:00pm
M-F and 6:00am-1:00pm Saturday, with
after-hours fob controlled access

TELECOMMUNICATIONS

Comcast (fiber),
Silver IP and AT&T

HVAC

Chiller Cooling System and Hot Water Heating
System. HVAC provided 8:00am-6:00pm
M-F and 8:00am-1:00pm Saturday

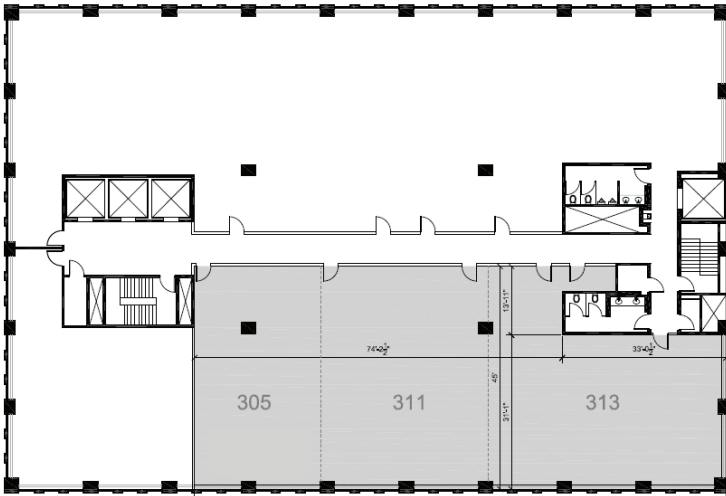
TRANSPORTATION

On-site Clark/Division Red Line, Divvy
Station and 22/36/70 Bus Lines

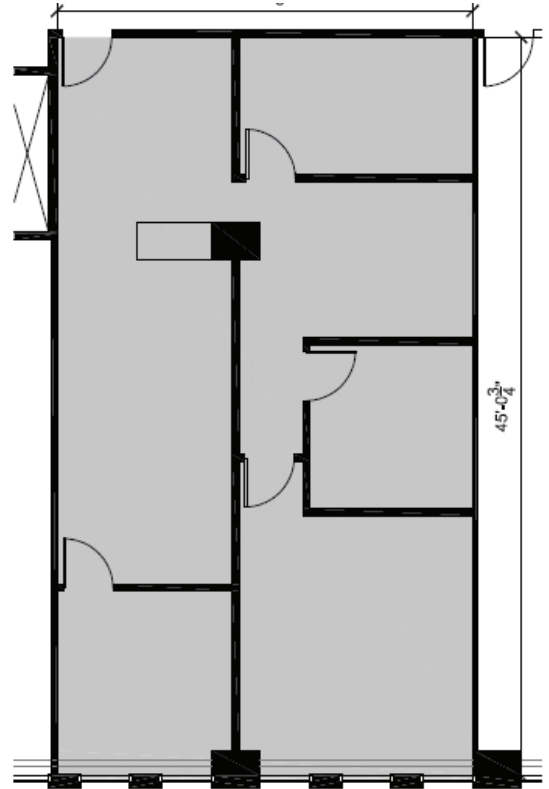


Floor Plans

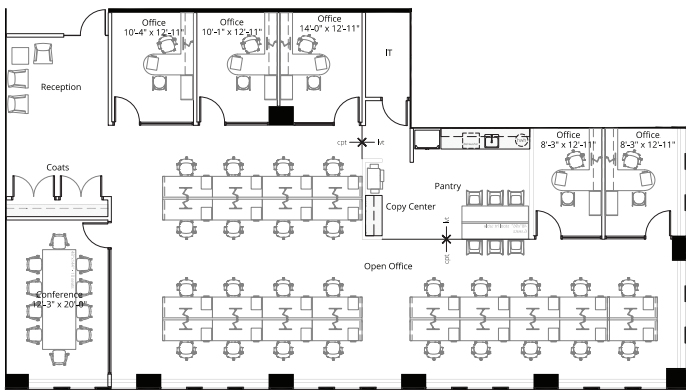
Suite 300
5,072 RSF



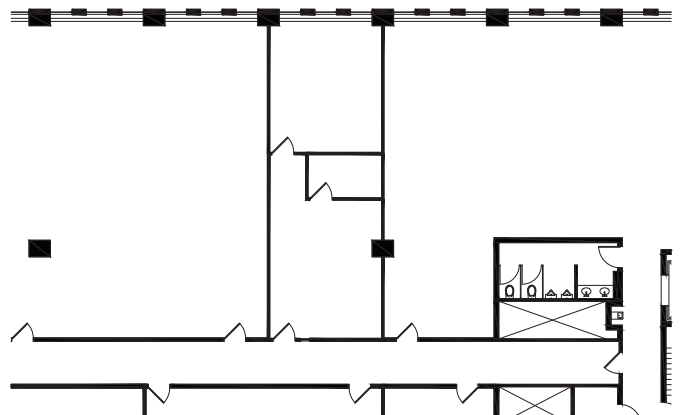
Suite 305
1,337 RSF



Suite 311
3,832 RSF **New 2017 Spec Suite**

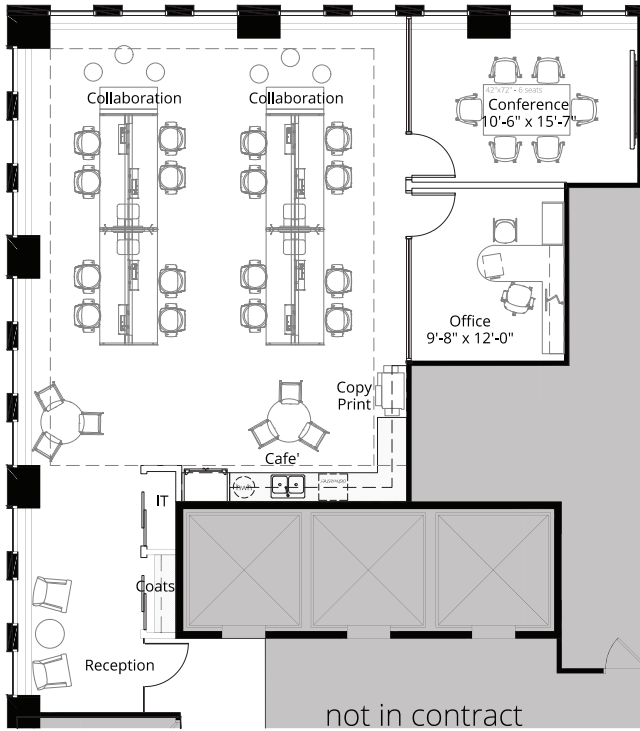


Suite 312
812 RSF

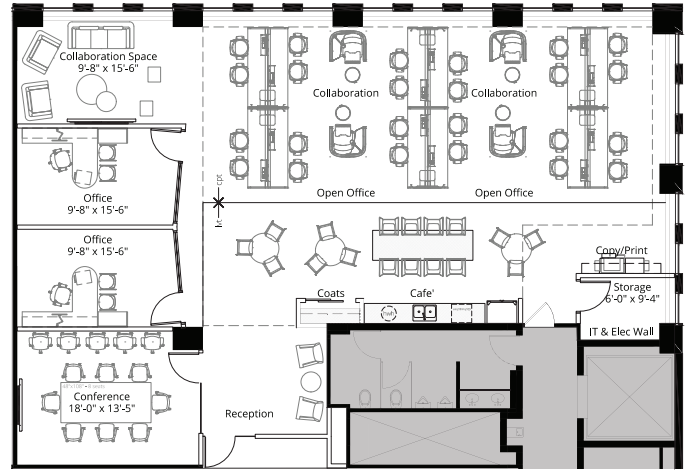


Floor Plans

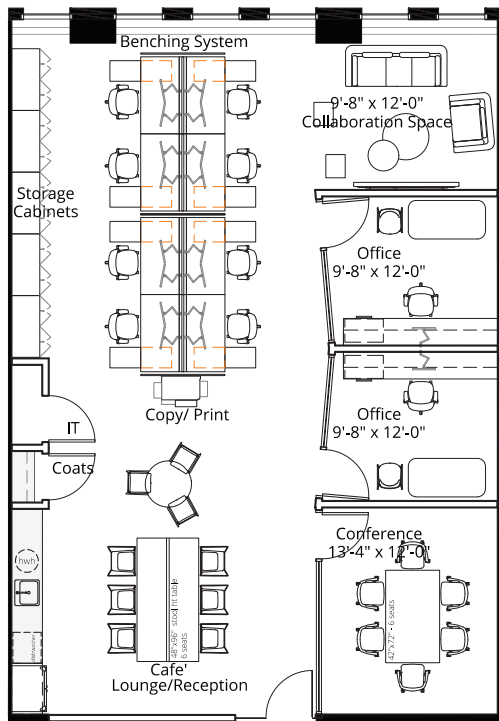
Suite 402
1,594 RSF **New** 2017 Spec Suite



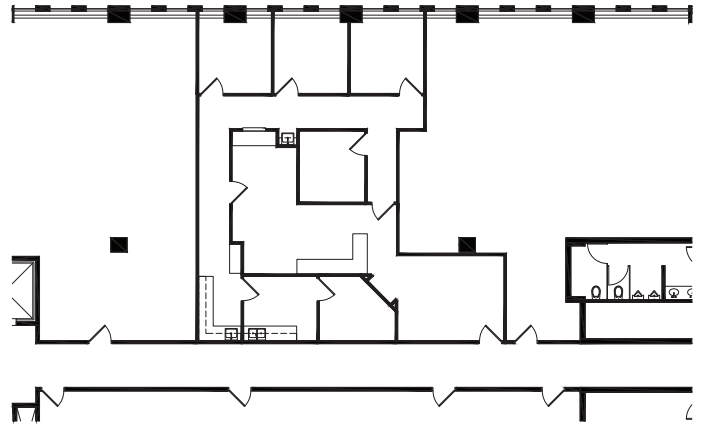
Suite 412
2,573 RSF **New** 2017 Spec Suite



Suite 503
1,657 RSF **New** 2017 Spec Suite



Suite 608
1,689 RSF



The Area

Convenient location relative to public transportation and Gold Coast neighborhood's myriad culinary, night-life and cultural attractions



Teddy Walsh
312-470-3812
teddy.walsh@cushwake.com

Jack McKinney Jr.
312-819-4404
jack.mckinneyjr@cushwake.com

